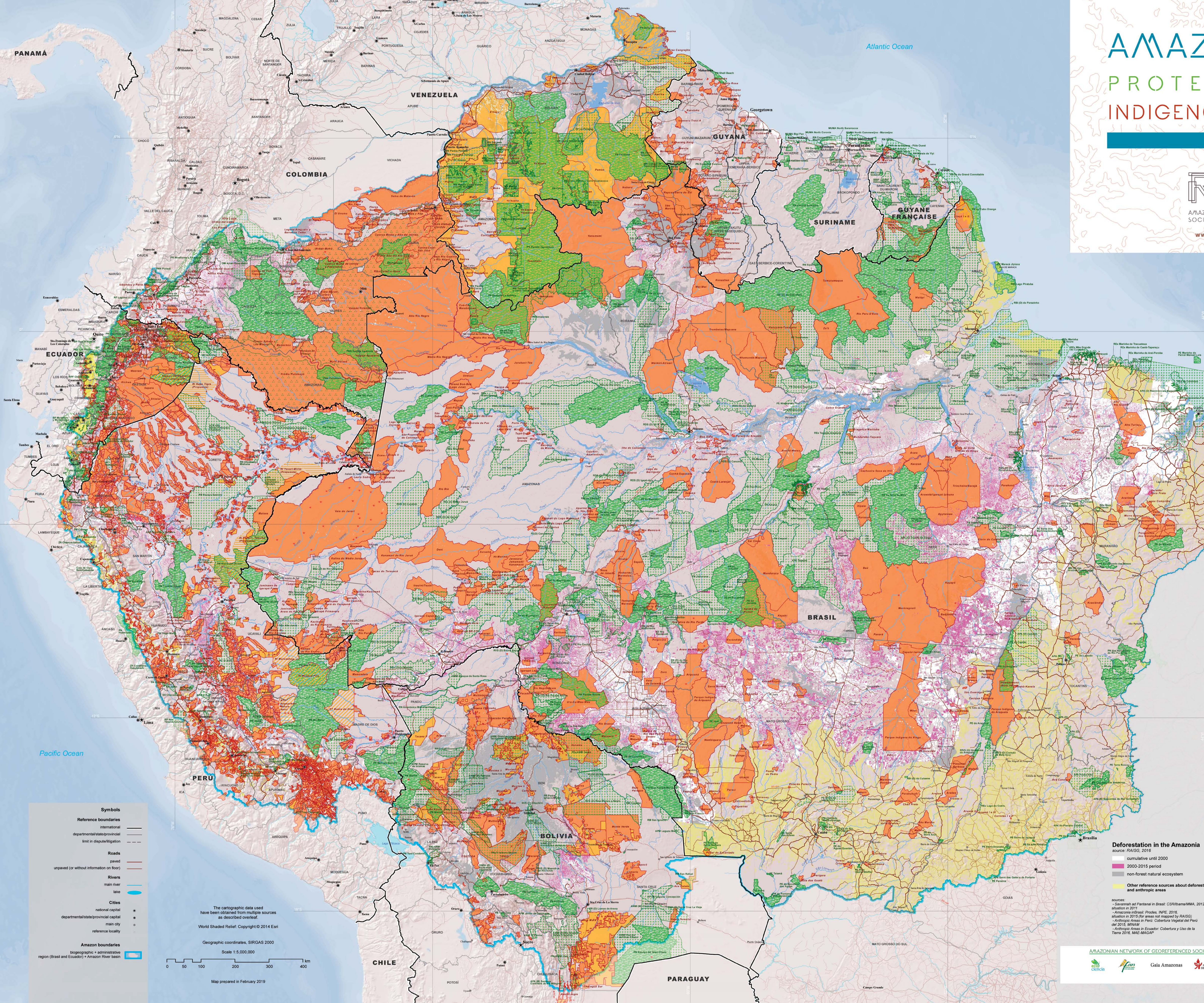


AMAZONIA 2019

PROTECTED AREAS

INDIGENOUS TERRITORIES

RAISG
 AMAZONIAN NETWORK OF GEOREFERENCED
 SOCIO-ENVIRONMENTAL INFORMATION
www.amazoniasocioambiental.org



Indigenous Territories

- areas of traditional occupation and use**
officially recognized
- areas of traditional occupation and use**
not officially recognized, in process of being demarcated or without status information
- indigenous reservation or "intangibile zone"**
- proposed indigenous reservation**
- indigenous peoples who are "isolated, un-contacted or in process of establishing contact"**
recent sighting or other indication

Natural Protected Areas

- indirect use (strict protection)**
exploitation of natural resources prohibited
- direct use (sustainable use)**
utilization of natural resources permitted
- direct/indirect use**
- transitional categories**
can be changed to other categories

Deforestation in the Amazonia

- source: RAISG, 2016
- cumulative until 2000
- 2000-2015 period
- non-forest natural ecosystem
- Other reference sources about deforestation and anthropic areas

Symbols

Reference boundaries
 international
 departmental/state/provincial
 limit in dispute/litigation

Roads
 paved
 unpaved (or without information on floor)

Rivers
 main river
 lake

Cities
 national capital
 departmental/state/provincial capital
 main city
 reference locality

Amazon boundaries
 biogeographic + administrative region (Brazil and Ecuador) + Amazon River basin

The cartographic data used have been obtained from multiple sources as described overleaf.

World Shaded Relief. Copyright © 2014 Esri

Geographic coordinates, SIRGAS 2000
 Scale 1:5.000.000

Map prepared in February 2019

